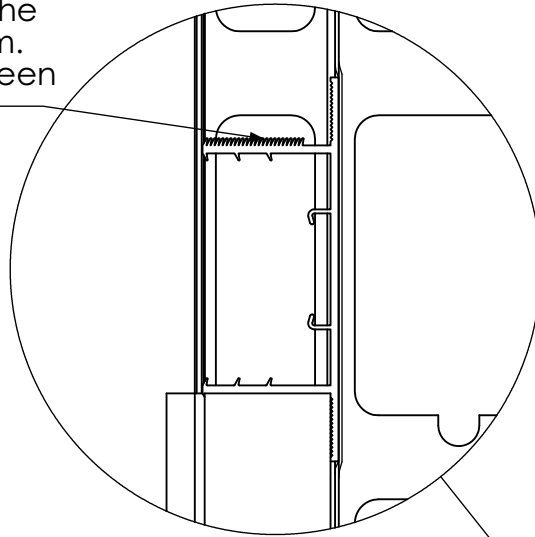
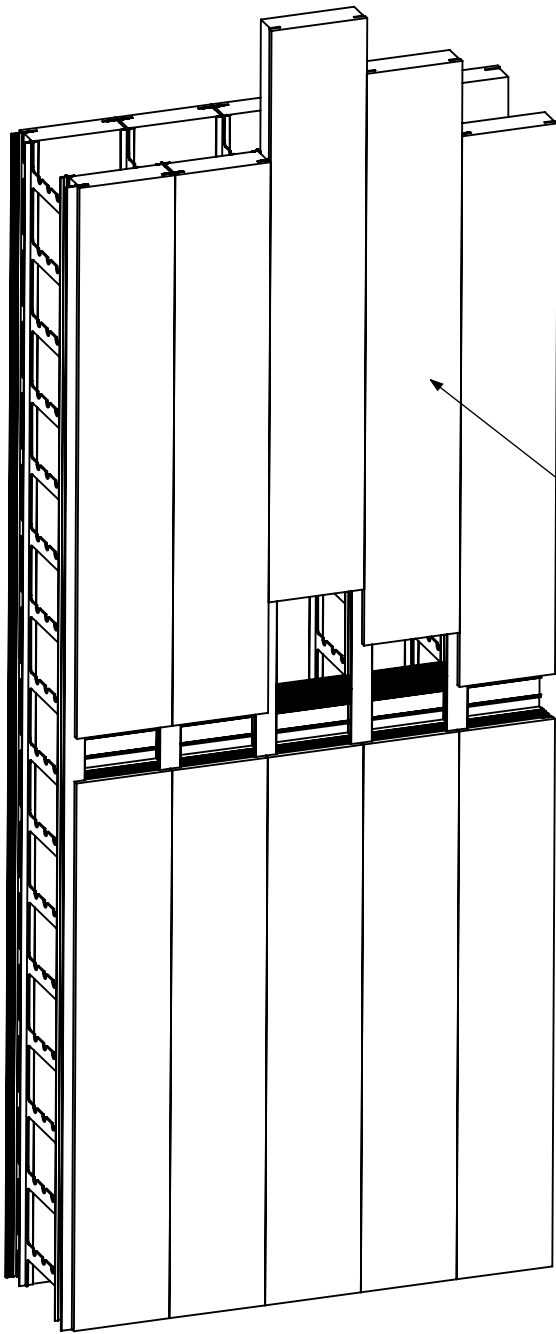
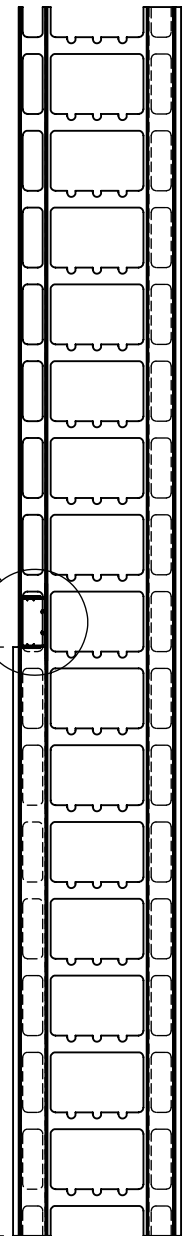


The E-Connect System gets placed in the poly channel of the TF System® I-Beam. Make sure the E-channel is secure between the two flanges on the TF System®.

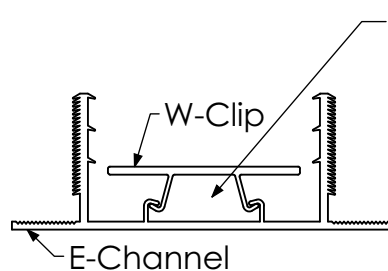


The above panels can be slid in from top of wall

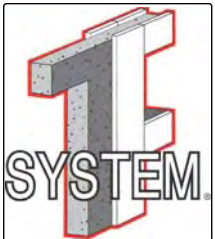
Cut poly to height that allows E-Connect System to be in line with conduit opening in TF System® I-beam.



**\*\*This conduit system is put in before the wall is poured.\*\***



Electrical gets run through this area. The W-clip is snapped in to hold the wire in place.



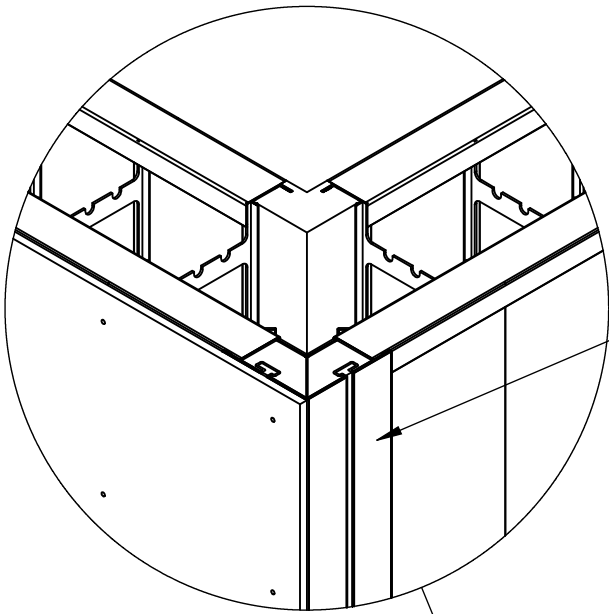
E-Connect System

Before Pour Conduit System

TF System®  
3030C Holmgren Way  
Green Bay, WI 54304 USA  
800-360-4634

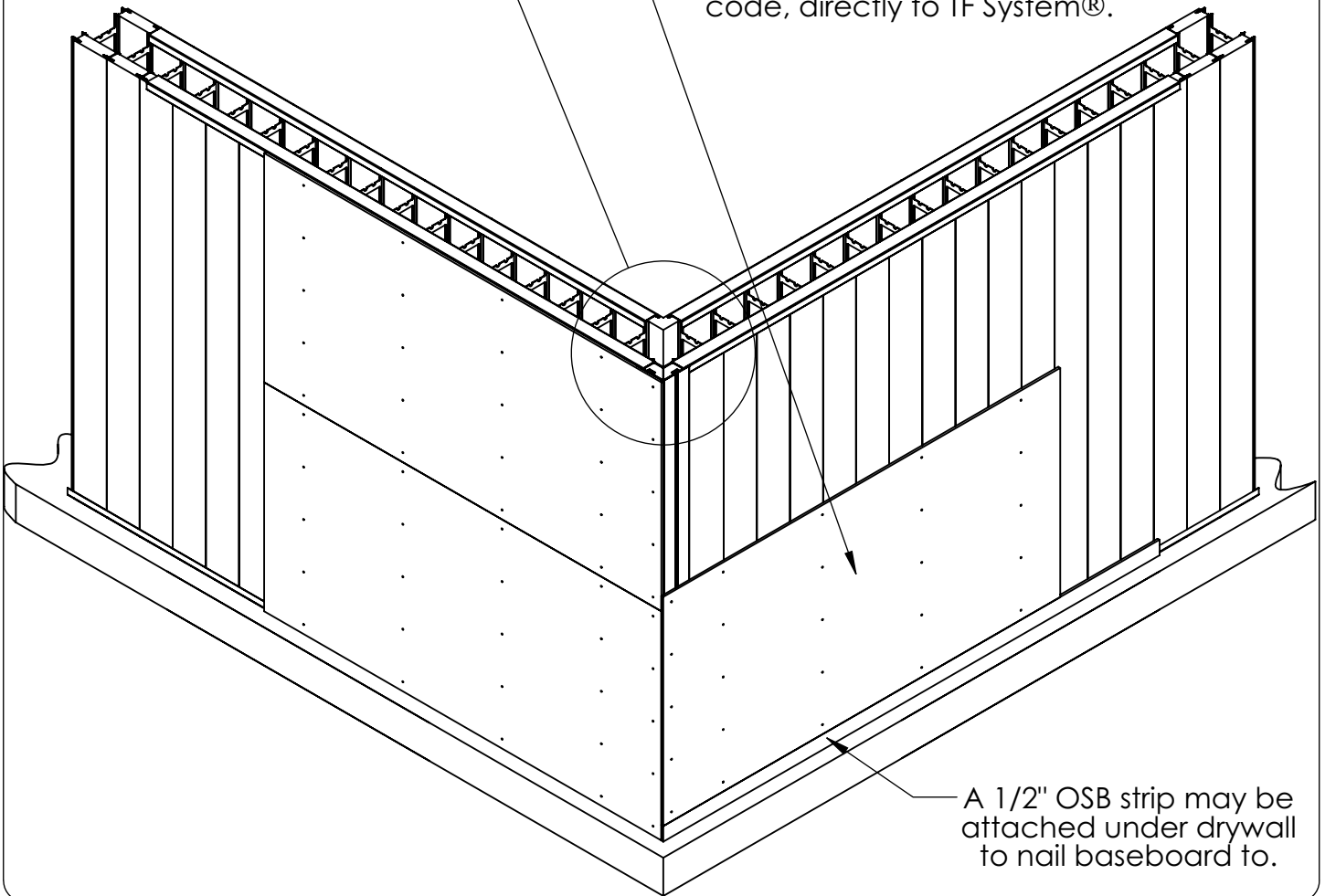
Date: 8/18/09

Page Number: 66

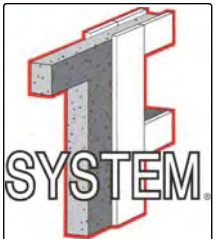


Use the TF System® corner to attach drywall.

Attach drywall, according to code, directly to TF System®.



A 1/2" OSB strip may be attached under drywall to nail baseboard to.



## Attaching Drywall

TF System®  
3030C Holmgren Way  
Green Bay, WI 54304 USA  
800-360-4634

Date: 8/18/09

Page Number: 67

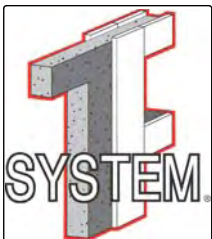
## About This Manual

This manual is intended to assist the contractor by illustrating techniques commonly used to erect walls using TF System® Insulated Concrete Forms. A basic knowledge of construction terms and skills, and concrete pouring techniques will help to ensure a successful project. Project specifications must meet or exceed local, state, or national codes and/or regulations.

### Disclaimer

This publication is offered as a convenience to TF System® users. The ideas and guidelines contained within this manual are those of the designers of the TF System®. All statements, drawings, and pictures are based upon the beliefs from experience and observation and do not replace professional opinion or governmental requirements. This manual does not create or provide any express or implied warranty to the reader. Due to differing conditions, tools, and individual skills, TF System® - The Vertical ICF, Inc. and the designers of the TF System® assume no responsibility for errors or omissions and reserve the right to make changes to both the publication and disclaimer without notice. All information made available by TF System® - The Vertical ICF, Inc. neither endorses other products nor makes any warranties, representations, or guarantees concerning the safety or effectiveness of either the products, techniques, or concepts discussed, illustrated, demonstrated, or described in this manual. Before beginning any project, review the plans and instructions carefully, and if any doubts or questions remain, consult local experts or authorities. Because local codes and regulations vary greatly, you should always check with authorities to ensure that your project complies with all applicable local codes and regulations. Always read and observe all the safety precautions provided by any tool or equipment manufacturers and follow all accepted safety procedures. You may reproduce pages of this manual, without alteration, for your own personal use and for non-commercial distribution. TF System® - The Vertical ICF, Inc. requires written permission to reproduce materials for commercial distribution or other non-personal use. To receive written permission to reproduce this manual, either in parts or in its entirety, or to receive a copy of the TF System® warranty and damages document, write to:

TF System® - The Vertical ICF, Inc.  
3030C Holmgren Way  
Green Bay, WI 54304 USA.



## Disclaimer

Manual By: Andy Brabant

TF System®  
3030C Holmgren Way  
Green Bay, WI 54304 USA  
800-360-4634

Date: 8/18/09

Page Number: 70



**Call or Click Today**

**Write or Visit Us**

Toll Free: 800-360-4634

3030 Holmgren Way

Office: 920-983-9960

Green Bay, WI 54304 USA

Fax: 920-983-9962

[www.TFSystem.com](http://www.TFSystem.com)

**The Vertical ICF**

Patent Numbers: 5,611,182; 5,809,726; 6,026,620; 6,134,861